



ПРОДАЖА

CH-6928 Manno

3466

CHF 2'200'000.-

SELOIA  
CONSULTING



# Caractéristiques

Объект свободен	<b>По договоренности</b>	Количество туалетных	<b>1</b>
Type	<b>Дом</b>	Год постройки	<b>1980</b>
№:	<b>3466</b>	Жилая площадь	<b>195 m²</b>
Комнаты	<b>9</b>	Площадь участка	<b>681 m²</b>
Спальни	<b>4</b>	Volume	<b>1'109 m³</b>
Ванные комнаты	<b>3</b>		

Prix de l'objet	<b>CHF 2'200'000.-</b>
-----------------	------------------------

<b>Количество парковочных мест</b>
--

Крытая парковка	<b>1x</b>
-----------------	-----------

Открытая	<b>3x</b>
----------	-----------



# Vue extérieure













# Vue intérieure





















































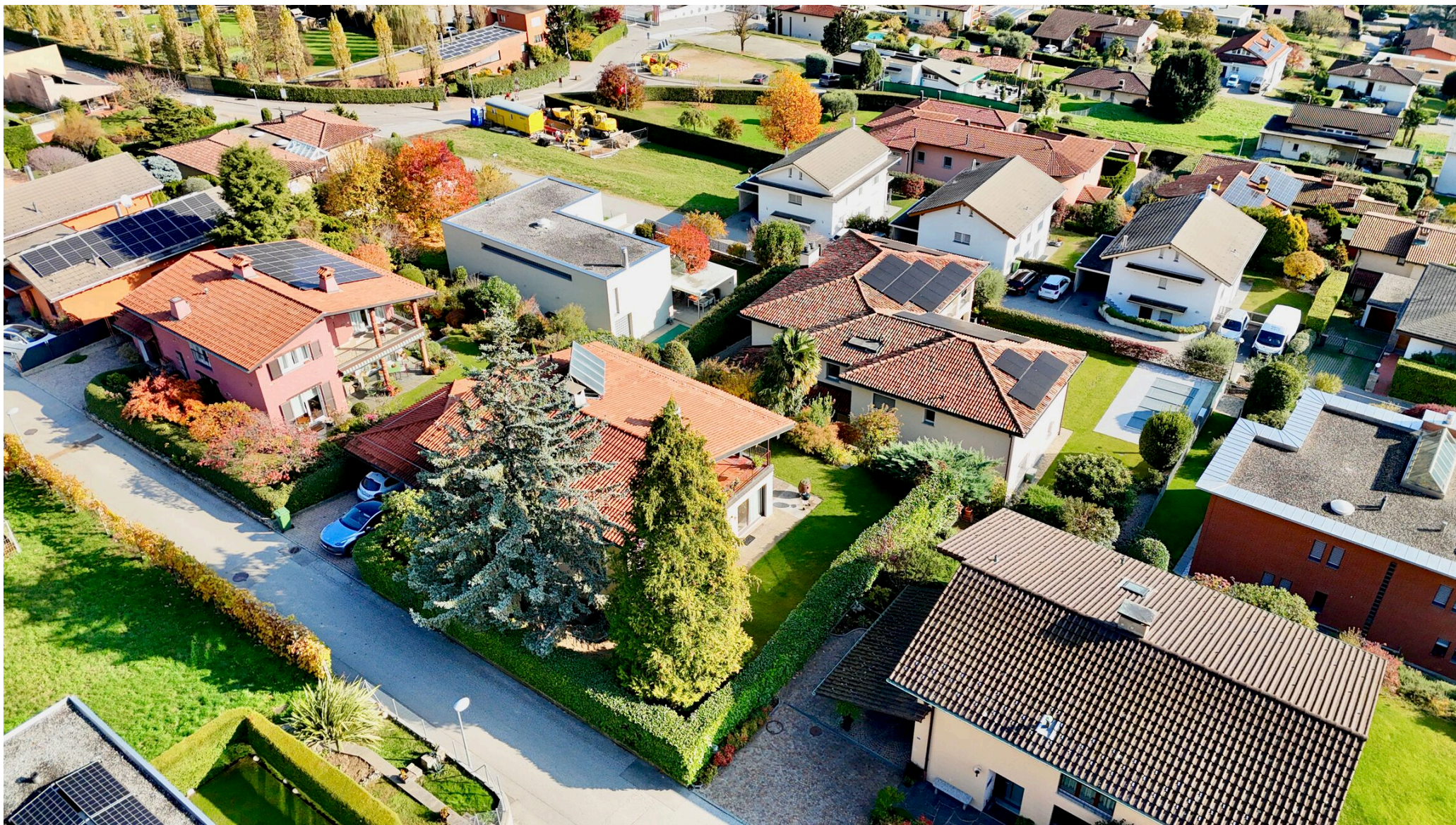








# Vue extérieure













# Contact

## Sequoia Consulting Sagl

Via Vedeggi 66b  
6983 Magliaso

Тел.: +41 78 637 66 15  
[fabio@sequoiaconsulting.ch](mailto:fabio@sequoiaconsulting.ch)  
<http://sequoiaconsulting.ch>

## Notes

---

---

---

---

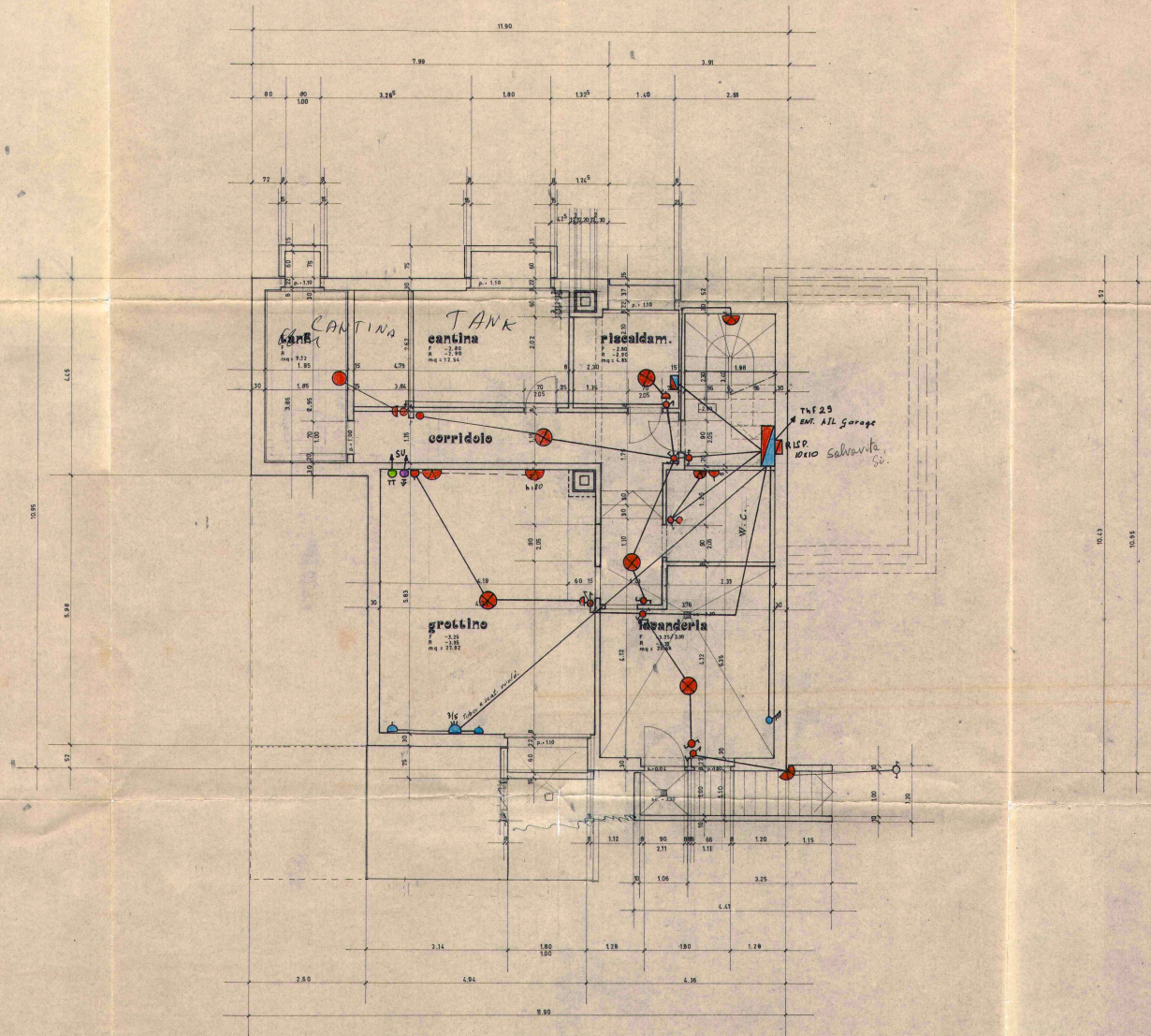
---

---



Proprietario: IMPRESA CARMINE S.A.		SCALA: 1:50	
Comune: MARINO	Mappale: 968	DATA:	DIS:
Oggetto: CASA UNIFAMILIARE		5.7.79	c.c.
RANGO: CANTINATO	N° 11	MODIFICATO:	
		13 FEB. 1980	
STUDIO D'ARCH. P. FRAUCHIGER VIA S. GOTTARDO 96 4900 NASSAGGIO (RI) 56 53 BA			
DIM: 88 / 67			

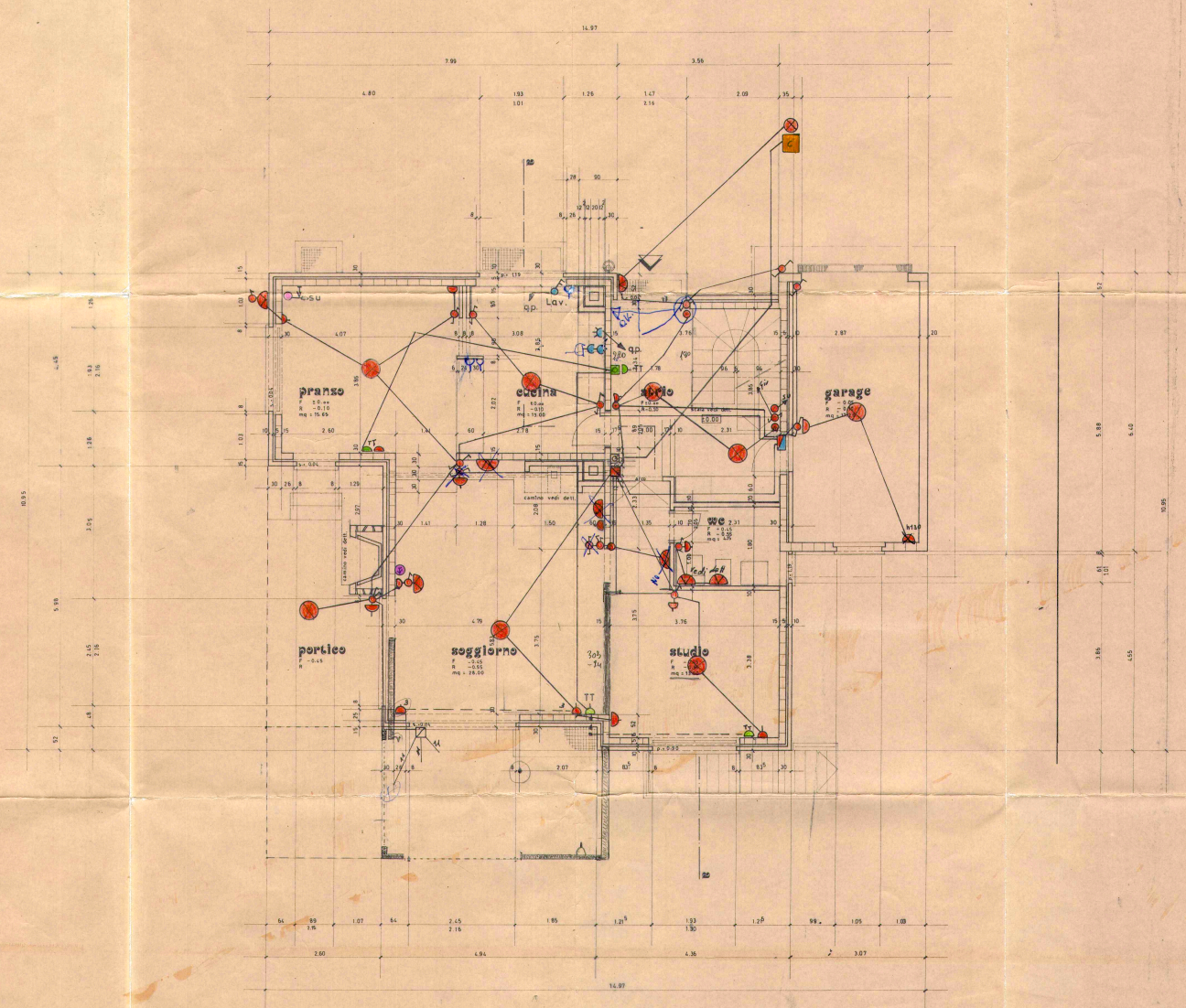
TELELUCE  
IMPIANTI ELETTRICI, TELEFONICI,  
ELETTRONICI, S.A.





Proprietario	IMPRESA CARME S.A.	Scala	1:50
Comune	MAINO	DATA	DIS.
Objetto	CASA UNIFAMILIARE	4.773	r.c.
	PANTERRENO	MODIFICATO	
	N° 12		
		13 FEB. 1980	
STUDIO ARCH. P. FRÄUCHIGER VIA S. GOTTARDO 46 6900 MASSA S. GIO. 091 5613.04		DIM. 58 / 67	

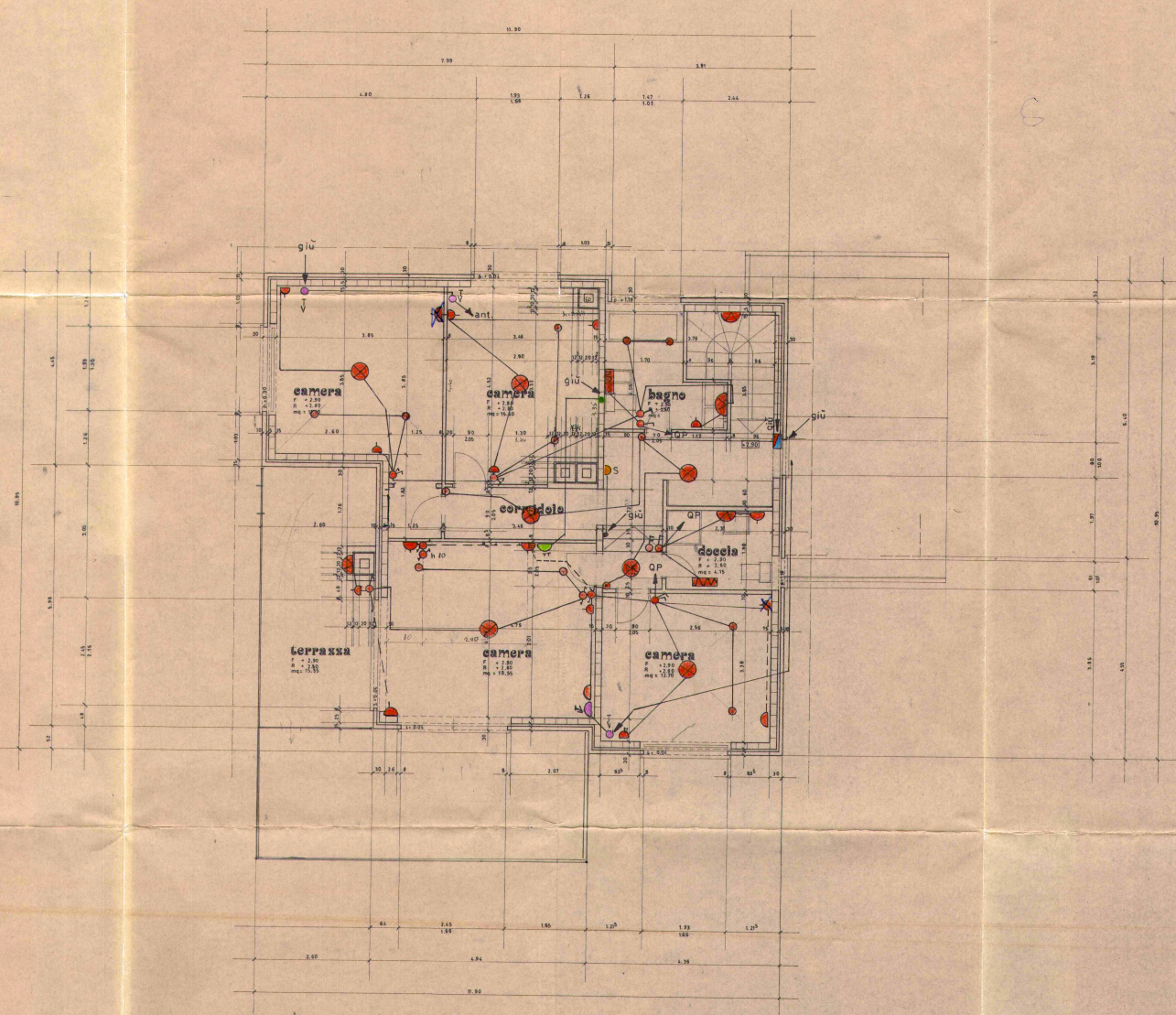
TELELUCE  
 IMPIANTI ELETTRICI, TELEFONICI,  
 ELETTRONICI, S.A.



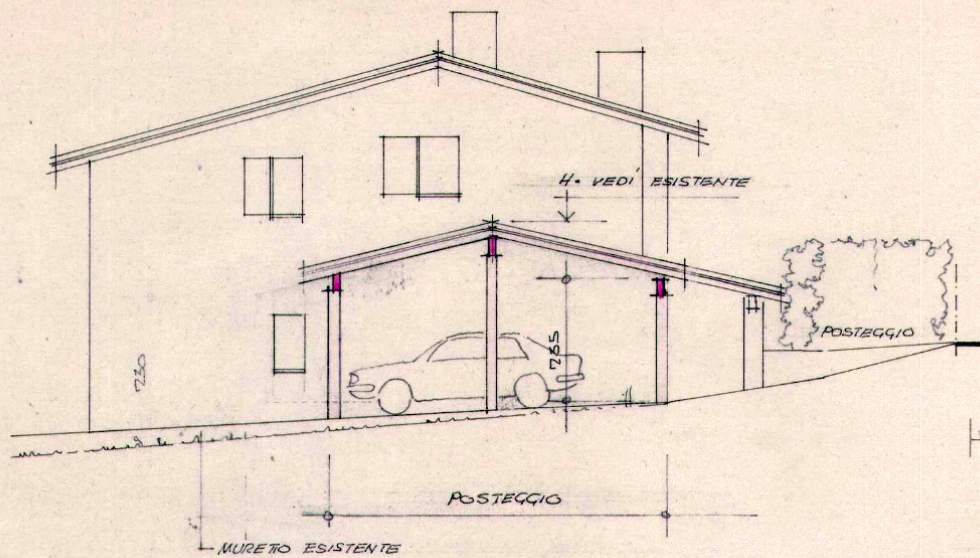


Proprietario: IMPRESA CARMINE S.A.	Scala: 1:50
Comune: MANNI Mapale: 869	DATA: DIS.
Oggetto: CASA UNIFAMILIARE	
1° PIANO N° 13	MODIFICATO:
	13 FEB 1980
STUDIO ARCH. P. FRAUCHIER VIA S. GOTTARDO 85 8300 MASSANO 091 54.53.01	
DIM. 88/68	

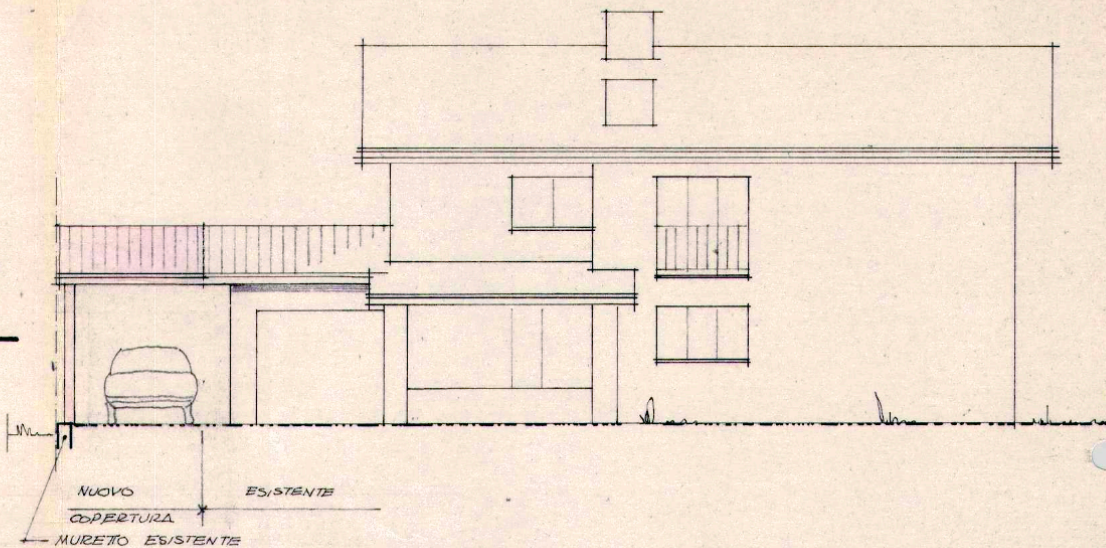
TELELUCE  
IMPIANTI ELETTRICI, TELEFONICI  
ELETTRONICI, S.A.



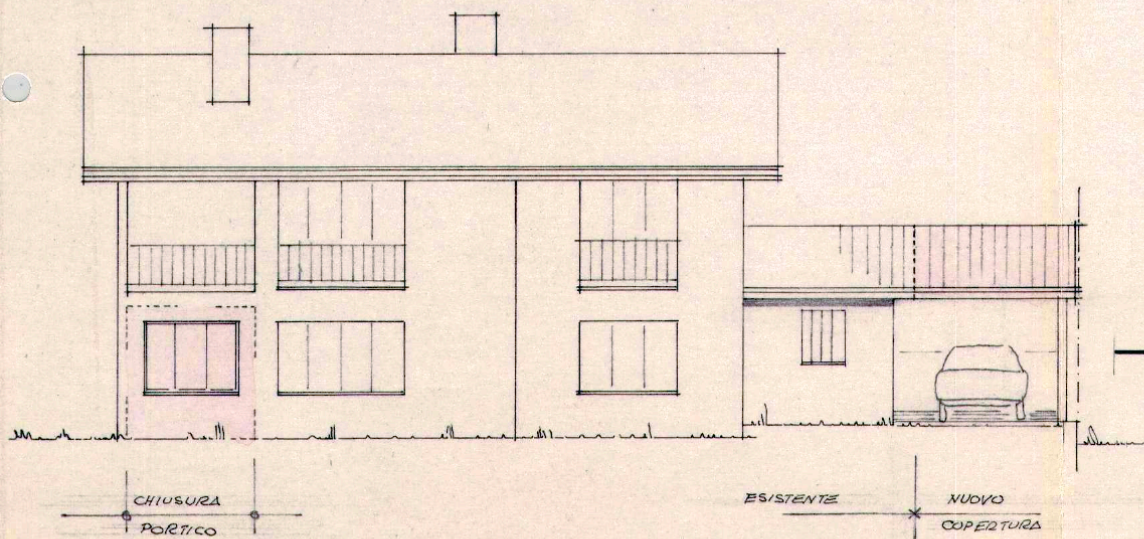




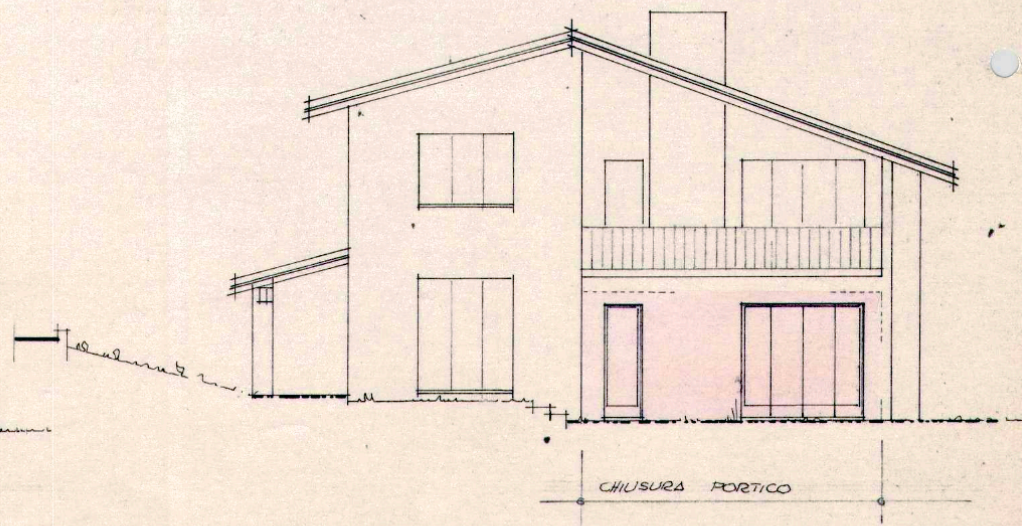
NORD



OVEST

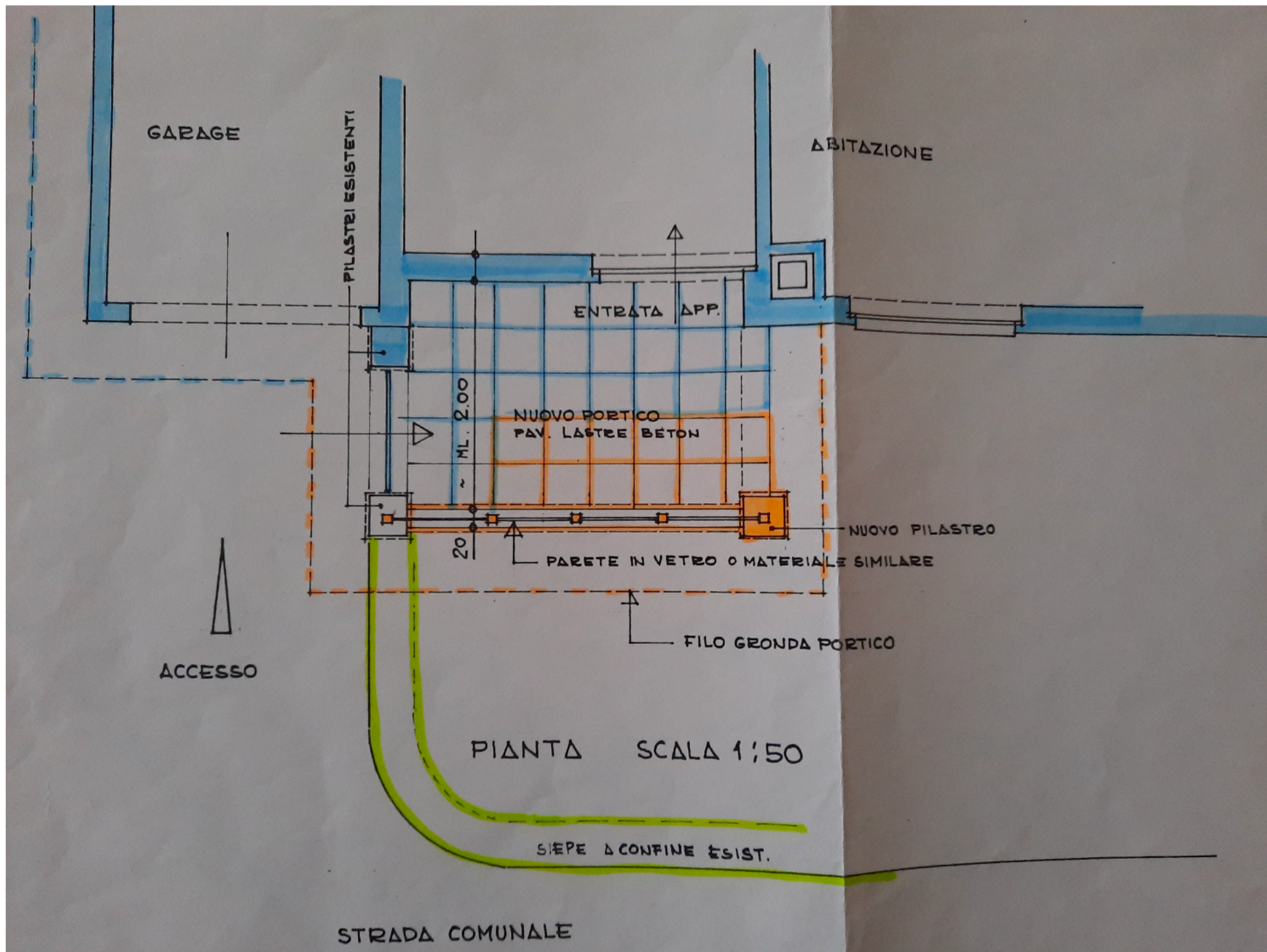


EST

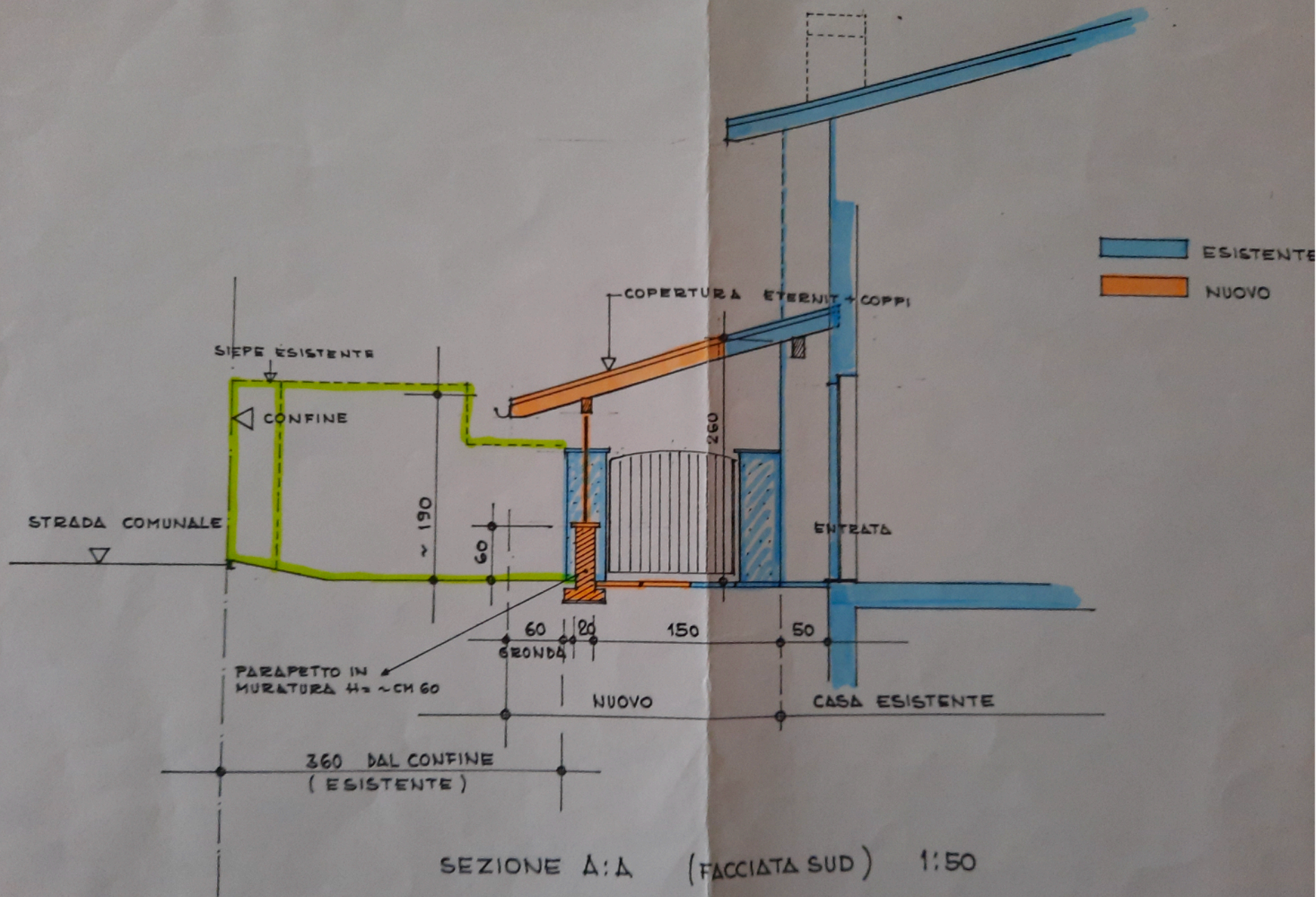


SUD



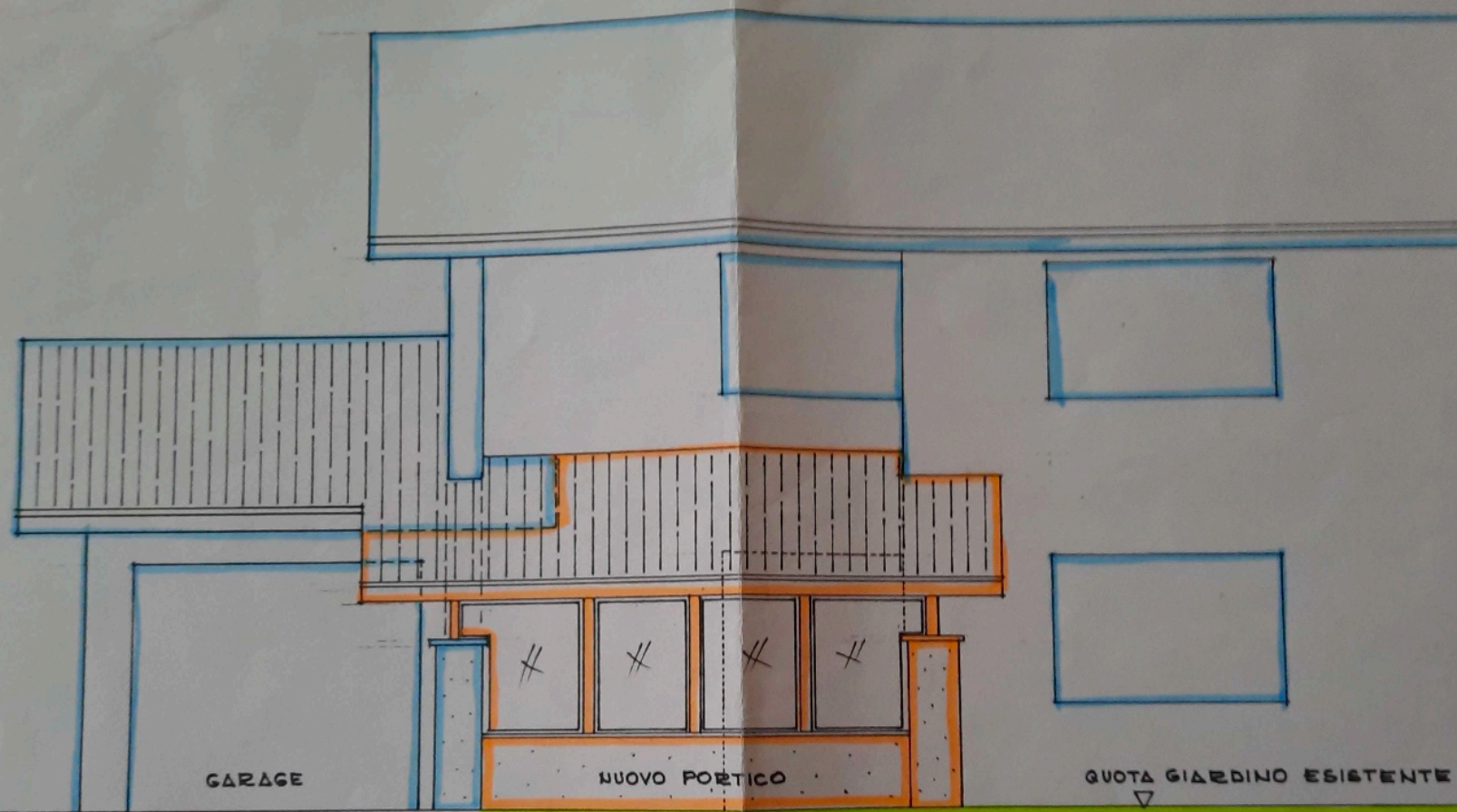








FORMAZIONE NUOVO PORTICO



FACCIATA OVEST 1:50

MANNO, 23.10.87