



FOR SALE

CH-6990 Cassina d'Agno, Via al Bosco 27

Timeless Elegance Nestled Between the Lake, Vineyards, and Sky

Price upon request



# Property description

## ***Timeless elegance in Cassina d'Agno: a historic estate with a pool and lake views***

In the picturesque heart of Cassina d'Agno, perched in a commanding and panoramic location, stands this prestigious 15th-century estate—a property of rare elegance where history, privacy, and natural beauty coexist in perfect harmony.

The main villa has been restored with great sensitivity, preserving the authentic character of the era and highlighting original architectural elements, without sacrificing contemporary comfort. The interiors, rich in charm and personality, offer generous spaces, refined details, and a warm, timeless atmosphere.

The property is surrounded by a large private park featuring manicured gardens, terraced vineyards, and a stunning swimming pool overlooking the lake and rolling hills. The detached guesthouse is an ideal solution for guests, staff, or for hosting social gatherings and private events.

An exclusive residence, designed for those who wish to live in a unique setting, immersed in the tranquility, history, and beauty of the Lugano region

# Characteristics

Availability	<b>To agree</b>	Year of construction	<b>1730</b>
Type	<b>Villa</b>	Latest renovations	<b>2015</b>
Reference	<b>5251</b>	Living area	<b>1,792 m<sup>2</sup></b>
Rooms	<b>11.5</b>	Ground surface	<b>9,761 m<sup>2</sup></b>
Bedrooms	<b>9</b>	Parking spaces	<b>14</b>
Bathrooms	<b>8</b>		

Object Price	<b>Price upon request</b>
<b>Number of parkings</b>	
14x Total	

# Picture(s)



# Exterior view











# Interior view

















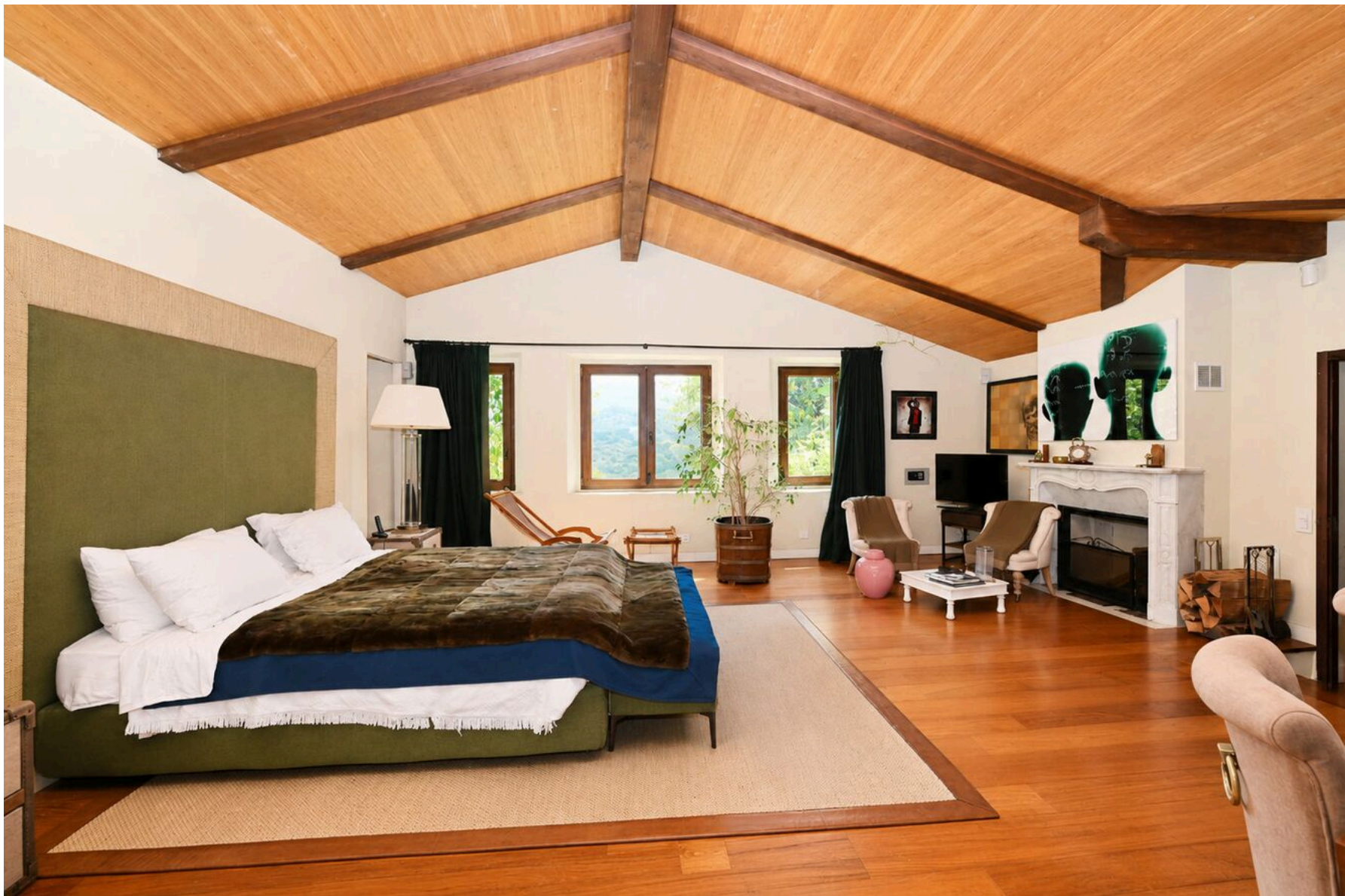








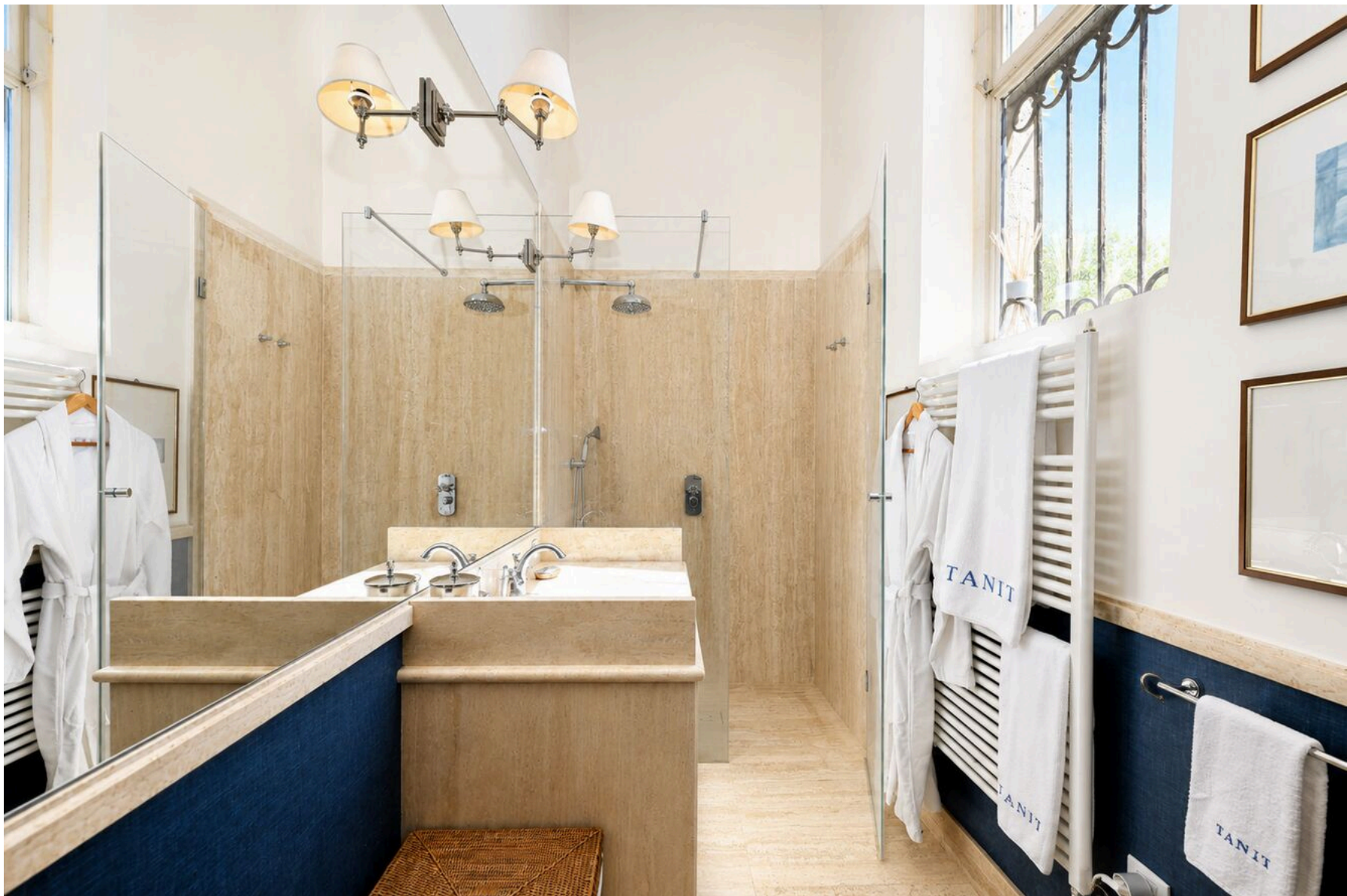












# Exterior view



# Contact

## Sequoia Consulting Sagl

Via Vedeggi 66b  
6983 Magliaso

Phone: +41 78 637 66 15  
fabio@sequoiaconsulting.ch  
<http://sequoiaconsulting.ch>

## Your consultant

**Mr. Ferrari Fabio**  
fabio@sequoiaconsulting.ch  
Mob.: +41 78 637 66 15

# Notes

---

---

---

---

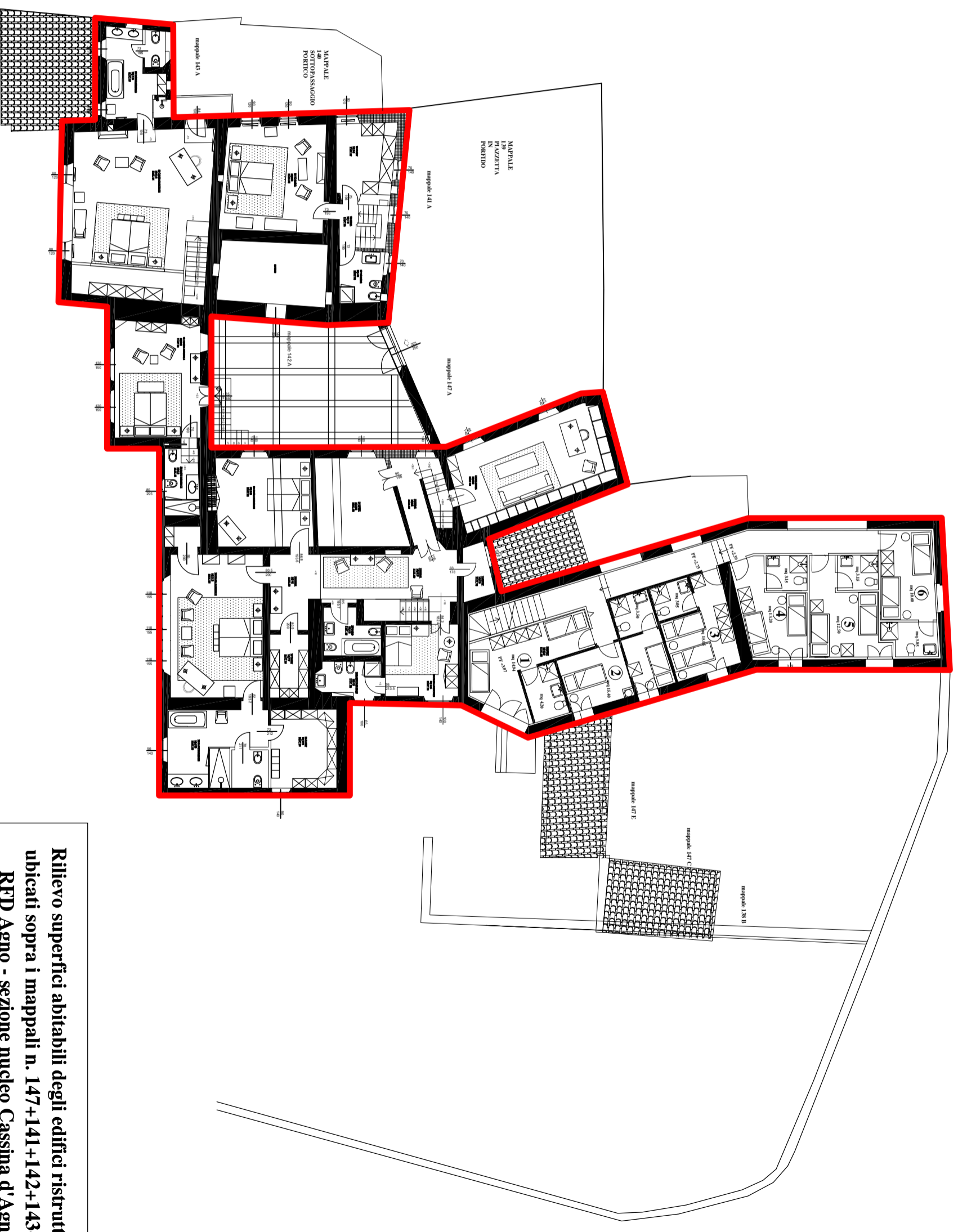
---

---

---

---





— SUL SUPERFICIE ABITABILE LORDA MQ 610.85

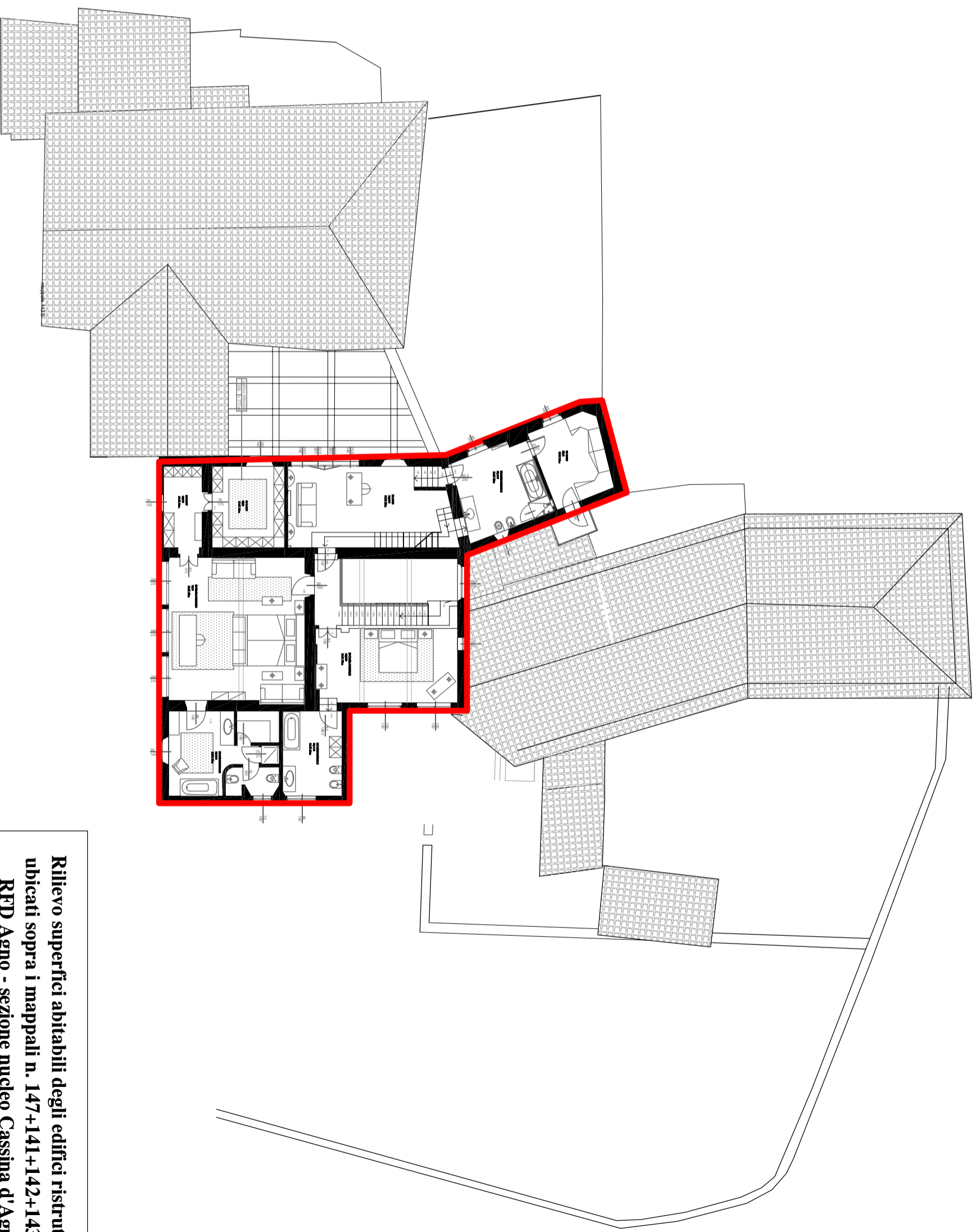
Rilievo superfici abitabili degli edifici ristrutturati  
ubicati sopra i mappali n. 147+141+142+143+138  
RFD Agno - sezione nucleo Cassina d'Agno

Proprietà: Juan Partecipazioni SA

**1° PIANO**

scala 1:200 - giugno 2026

**Marcel Battaini-Mastel**  
Ingegnere Civile  
Via Belramina 19 / CH - 6900 Lugano  
Cell.: +4179 713.19.57 / Email: battaini@g@ticino.com



— SUL SUPERFICIE ABITABILE LORDA MQ 247.34

Rilievo superfici abitabili degli edifici ristrutturati  
ubicati sopra i mappali n. 147+141+142+143+138

RFD Agno - sezione nucleo Cassina d'Agno

Proprietà: Juan Partecipazioni SA

**2° PIANO**

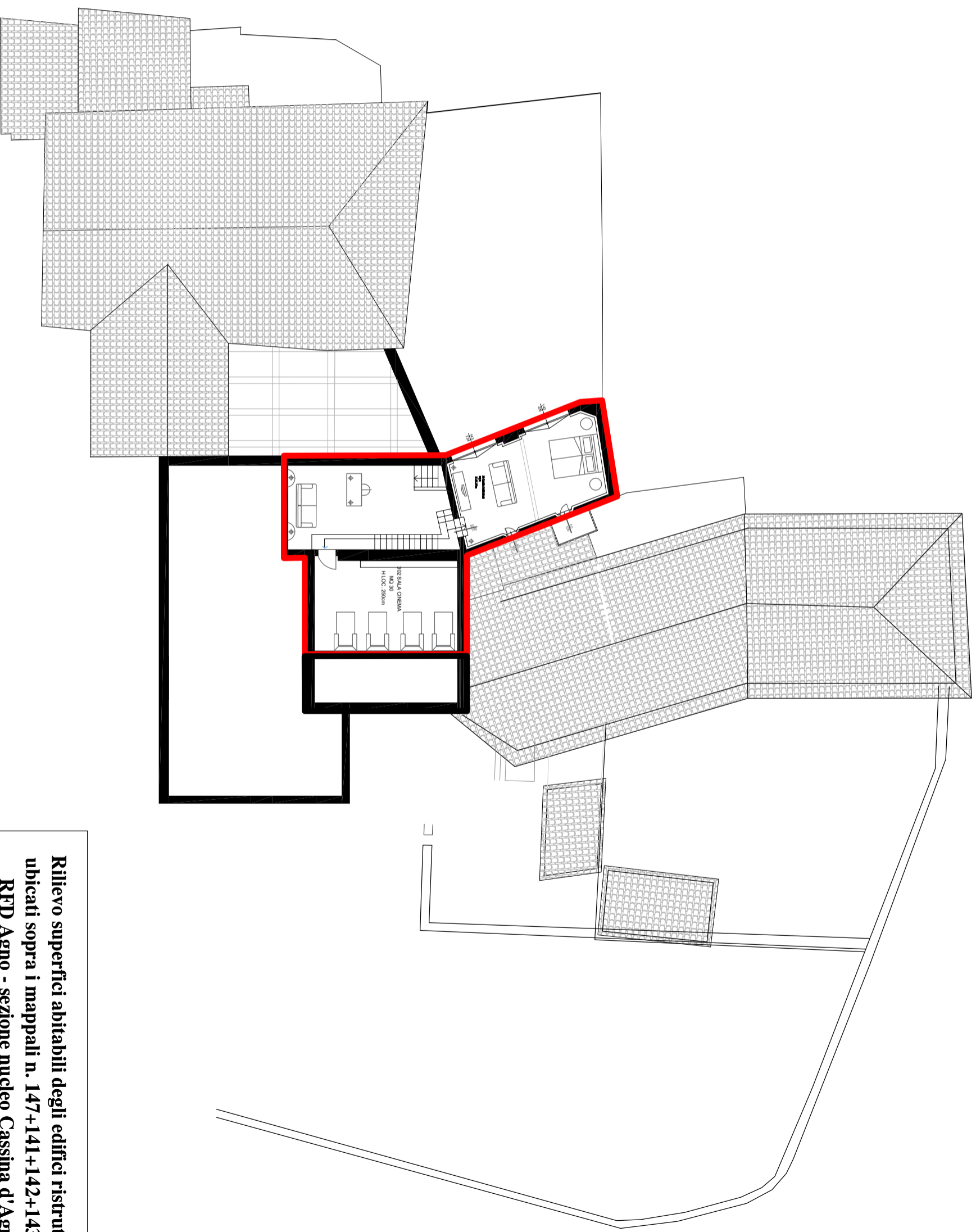
scala 1:200 - giugno 2026

**Marcel Battaini-Mastel**

Ingegnere Civile

Via Belramina 19 / CH - 6900 Lugano

Cell.: +4179 713.19.57 / Email: battainimg@ticino.com



**SUL SUPERFICIE ABITABILE LORDA MQ 110.73**

**locali tecnici MQ 20.47**

**Marcel Battaini-Mastel**

Ingegnere Civile

Via Beltramina 19 / CH - 6900 Lugano

Cell.: +4179 713.19.57 / Email: battainimg@ticino.com

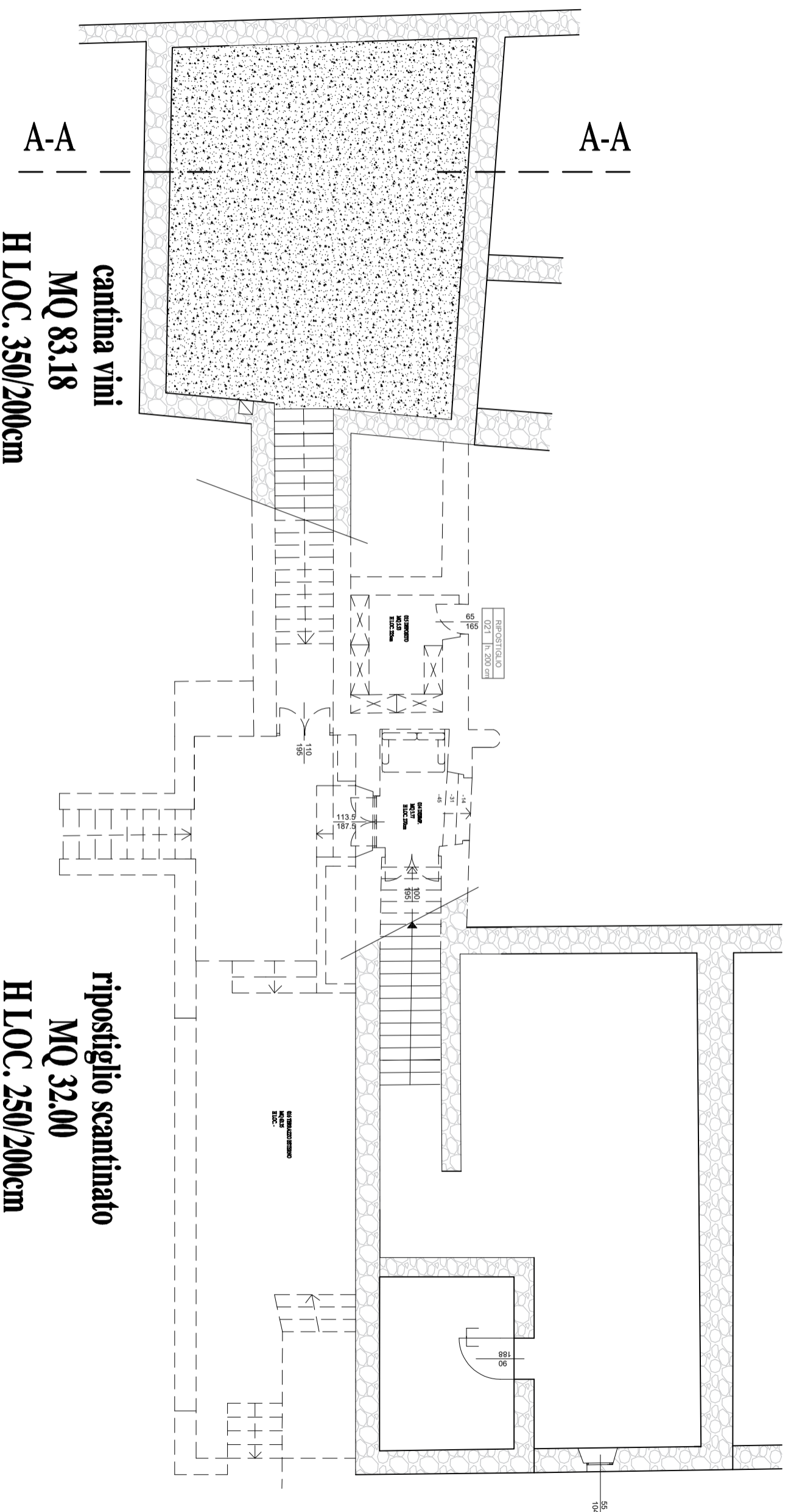
**Rilievo superfici abitabili degli edifici ristrutturati  
ubicati sopra i mappali n. 147+141+142+143+138**

**RFD Agno - sezione nucleo Cassina d'Agno**

**Proprietà: Juan Partecipazioni SA**

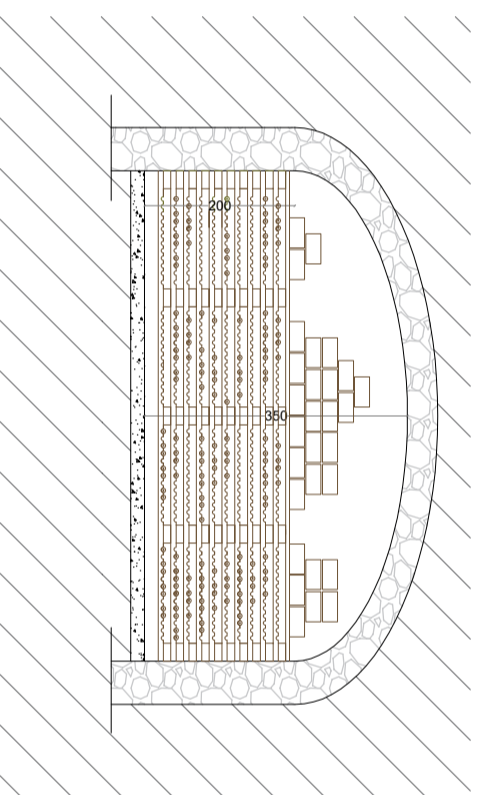
**PIANO MANSARDA**

scala 1:200 - giugno 2026



**cantina vini**  
**MQ 83.18**  
**H LOC. 350/200cm**

**ripostiglio scantinato**  
**MQ 32.00**  
**H LOC. 250/200cm**



**Marcel Battaini-Mastel**  
 Ingegnere Civile  
 Via Beltramina 19 / CH - 6900 Lugano  
 Cell.: +4179 713.19.57 / Email: battaini@ticino.com

Rilievo superfici abitabili degli edifici ristrutturati  
 ubicati sopra i mappali n. 147+141+142+143+138  
 RFD Agno - sezione nucleo Cassina d'Agno  
 Proprietà: Juan Partecipazioni SA  
**PIANO INTERRATO**  
**SEZIONE A-A**

scala 1:200 - giugno 2026



**Marcel Battaini-Mastel**

Ingegnere Civile

Via Beltrammina 19 / CH - 6900 Lugano

Cell.: +4179 713.19.57 / Email: battaini@g@ticino.com

**Rilievo superfici abitabili degli edifici ristrutturati  
ubicati sopra i mappali n. 147+141+142+143+138**

**RFD Agno - sezione nucleo Cassina d'Agno**

**Proprietà: Juan Partecipazioni SA**

**PIANO TETTI CON  
COPERTURA IN COPPI**

scala 1:200 - giugno 2026